

We miss monthly birthday parties at The Center!

Birthday celebrations are back!

Do you have a birthday in June?

Stop by The Center if you have a birthday this month. Pick up a small gift to help us be a part of your special day.

4th Tuesday of each month
Please call ahead! 215.679.6550

**Tuesday, June 23
12:00 to 2:00 pm**

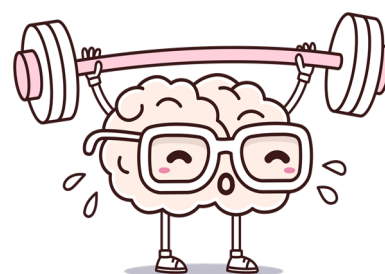
THE CENTER at THE OPEN LINK
517 Jefferson Street
East Greenville

If you had a birthday anytime during the COVID-19 closure and we missed your birthday, you are invited to pick up a gift!

*Details and availability subject to change and dependent upon the COVID-19 situation. Extra precautions are always being taken to ensure your health and safety!

TEASE YOUR BRAIN

1. A man stands on one side of a river, his dog on the other. The man calls his dog, who immediately crosses the river without getting wet and without using a bridge or a boat. How did the dog do it?
2. A sundial has the fewest moving parts of any timepiece. Which has the most?
3. What is unusual about the following words: revive, banana, grammar, voodoo, assess, potato, dresser and uneven?
4. What makes this number unique — 8,549,176,320
5. Put a coin into an empty bottle and insert a cork into the neck. How can you remove the coin without removing the cork or breaking the bottle?
6. 2 boxers are in a match scheduled for 12 rounds. One of the boxers gets knocked out after only 6 rounds, yet no man throws a punch. How is this possible?
7. A man takes his car to a hotel. Upon reaching the hotel, he is immediately declared bankrupt. Why?
8. What do these words have in common: polish, job, herb?



The Center at The Open Link is partially funded by Montgomery County Senior Services.

THE CENTER
at
THE OPEN LINK

June 2020

Staying Connected

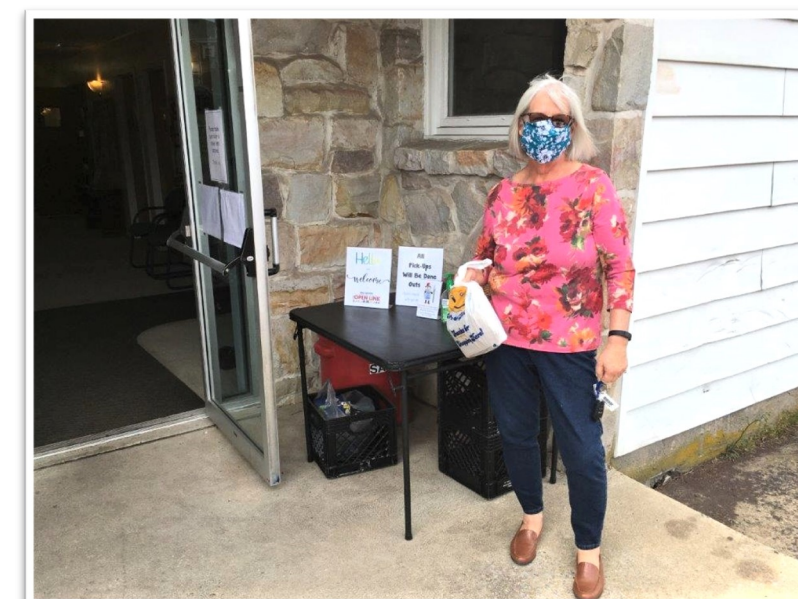
By Wendy Smeltz, Center Manager
Evet Hexamer, Asst. Center Manager

Our doors may be closed, but we want to continue to offer some of the programming you've come to expect from The Center like health and wellness, nutrition, education, fun and socialization. Yes, fun and socialization! Social distancing does not have to mean social isolation. If you can't come to us, we'll bring The Center to you!

Volunteers and staff have been making friendly phone calls to participants to see how they're doing, find out if they have needs, and to just say hello. And the monthly newsletter has continued, though it was no longer filled with events and activities. Thank you for the positive feedback and for your participation in the games. Now we're looking for more ways to connect until we can be together in groups again, and we hope you'll join us!

To continue supporting older adults, we are introducing remote programming. This includes a Facebook group for The Center which will provide ideas to keep you active and connected while home, and allow you to say hello to others at The Center.

Continued on page 3



Michele Hohlfeld from the Upper Perkiomen Rotary recently dropped off local restaurant gift cards for seniors in need donated by the club. Thank you!

Friendly Phone Calls from The Center

During these challenging times it is common to feel isolated or lonely. The Center is offering free social calls to older adults through weekly phone calls from staff or volunteers.

To sign up, call 215.679.6550.



The annual Outside-In Picnic is one of the most popular events here at The Center. Rather than cancel it, we're doing it differently!

"Drive-Thru"

Summer Picnic

Friday, June 26th, 2020

12:30 PM - 2:00 PM

Enter on Jefferson Street. Stay in your car.
Go through the driveway. Exit in the rear.

Complimentary

**Get a bagged lunch with a hot dog and side items
and say hello to Center staff!**

RSVP by Tuesday, June 23rd: Call 215.679.6550
Your RSVP will be used to enter your name in a raffle!



**517 Jefferson St.
East Greenville**



Extra precautions will be taken to ensure your health and safety.

*Date and details subject to change and are dependent on the COVID-19 situation.

Continued from page 1

We need your help to make remote programming a success though. Seniors, we want to hear from you! What kind of programs would you like us to offer remotely? Is it book club, computer/tech support, discussion groups? All ideas are welcome. We also want to know *how* you would like to participate. This can include phone discussions, social media, email, Zoom (internet) meetings, and "snail mail".

We would also like to recruit you! Do you have a skill, hobby or passion you would like to share? We need volunteers to lead classes and host sessions, either one-time or ongoing. Can you help with computer/tech questions, lead a history or current events group, give tips on nutrition or provide legal advice? The possibilities are endless!

Email Evet Hexamer, Assistant Center Manager, at programmanager@theopenlink.org or call the office at 215.679.6550 if you have ideas or want to volunteer. We look forward to hearing from you and continuing programs that matter to you!

Monday Community Meal

Info on the return of the community meal will be made available as soon as possible.



Puzzle on back page



1. The lake was frozen.
2. An hourglass, with thousands of grains of sand.
3. Take the first letter of each word and place it at the end. It will spell the same word backwards.
4. It contains each number, zero through nine, in alphabetical order.
5. Push the cork down into the bottle. Then shake the coin out.
6. Both boxers are female.
7. The man is playing Monopoly.
8. All three words are pronounced differently when the first letter is capitalized.

BRAIN TEASER ANSWERS

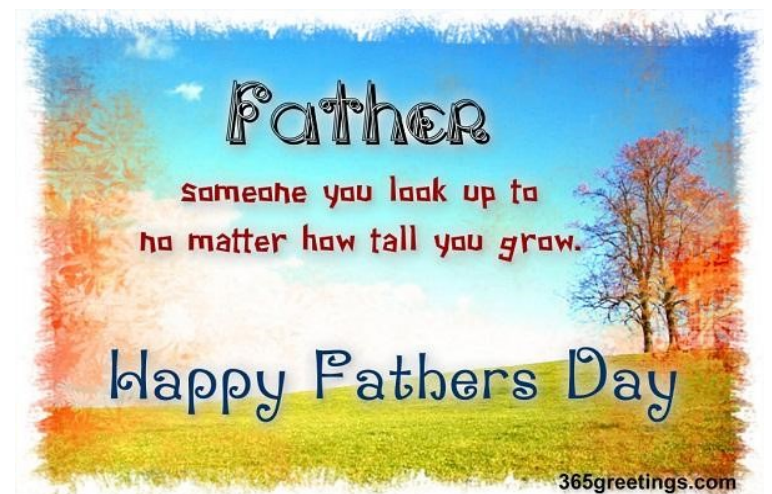


Bagged nutritious lunch
includes frozen meal to heat at home, side items, bread and milk
No cost for individuals age 60 or over, or a regular Center participant

**Monday, Wednesday, Friday
12:00 - 12:30 PM Pick-Up**
Call by 11:00 AM that day to order!
215.679.6550

Donations Welcome

Drive-thru Pick-up - Call at arrival



Farmer's Market Vouchers Are Coming!

The Senior Farmer's Market Nutrition Program provides vouchers to redeem for fresh fruit and vegetables.

Eligibility: Montgomery County resident, 60+ years old during the program year (2020), income requirements

Due to COVID-19 protocols, distribution will be changing and the start date will be delayed!